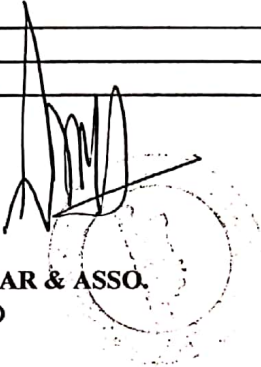


**AN ABSTRACT ESTIMATE FOR PROPOSED CONSTRUCTION OF
AT MULTI FRUIT PULPING UNIT AT
G.NO.151 /1 AT WADAWALI TQ PAITHAN DIST AURANGABAD
BELONGS TO M/S APEGAON AGRO PROCESSOR
SUMMARY**

S.NO.	PARTICULARS	AMOUNT
1	FRUIT ARRIVAL PRODUCT DISPATCH	1146244.02
2	GODOWN AND COLD STORAGE	1098995.77
3	PROCESSING HALL	5359059.38
4	OFFICE AND LAB	1294006.32
	TOTAL	8898305.48
	ADD GST 18%	1601694.987
	GRAND TOTAL	10500000.47
	SAYS	1,05,00,000.00

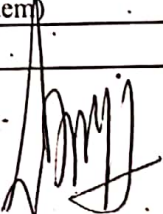

ARCHITECT:
VISHNU KUNJAR & ASSO.
AURANGABAD

**AN ABSTRACT ESTIMATE FOR PROPOSED CONSTRUCTION OF
FRUIT ARRIVAL & PRODUCT DISPATCH AT MULTI FRUIT PULPING
UNIT AT G.NO:151 /1 AT WADAWALI TQ PAITHAN DIST AURANGABAD
BELONGS TO M/S APEGAON AGRO PROCESSOR
ABSTRACT SHEET**

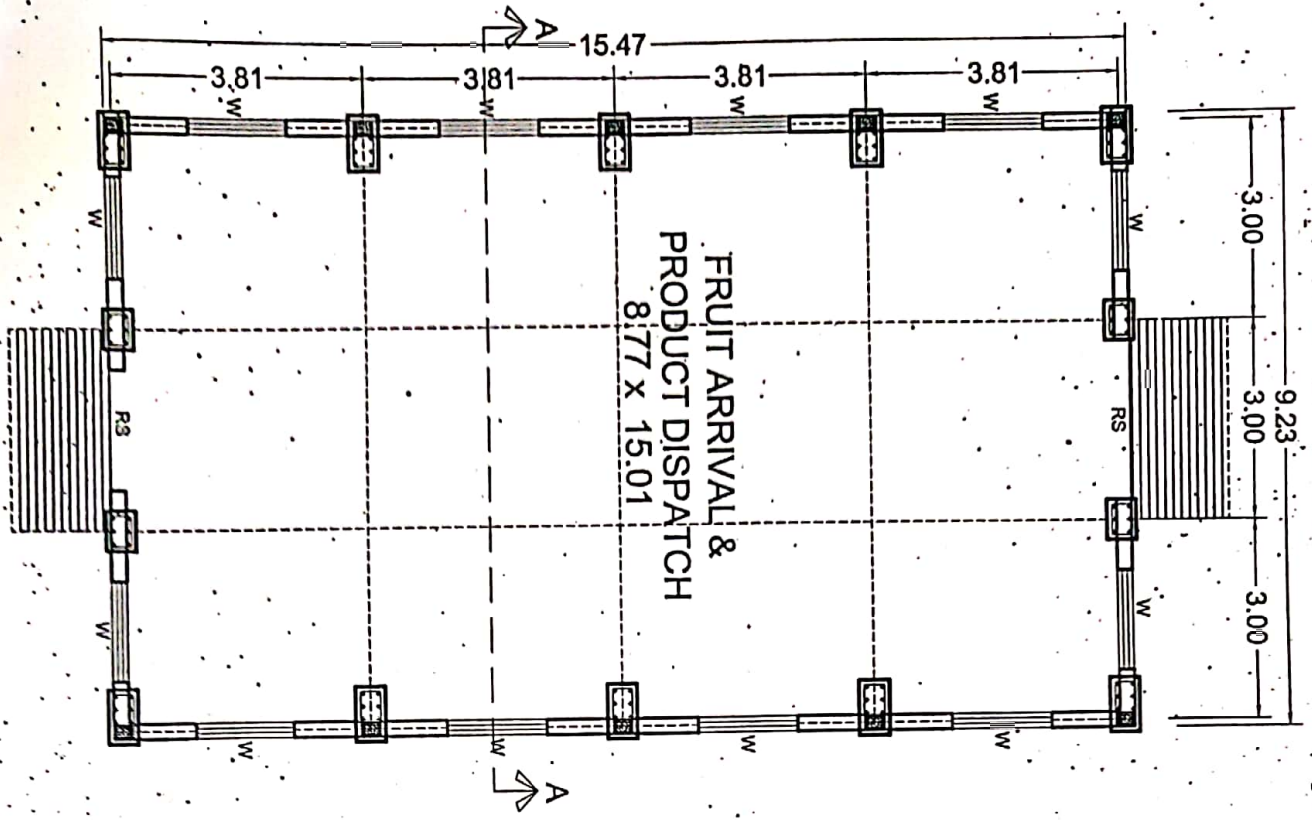
SR.N O:	DESCRIPTION OF ITEM	QTY.	RATE	UNIT	AMOUNT
1	Excavation for foundation in earth, soil of all types, sand, gravel and soft murum, including removing the excavated material up to a distance of 50 m. beyond the building area and stacking and spreading as directed, dewatering, preparing the bed for the foundation and necessary back filling, ramming, watering including shoring and strutting etc. complete. (Lift upto 1.5 m.) By Mechanical Means SSR 2021-22	50.90	193.00	Cum	9824.47
2	Providing and laying in situ cement concrete 1:3:6 of trap / granite / quartzite / gneiss metal for foundation and bedding including dewatering, formwork, compacting, roughening them if special finish is to be provided, finishing, if required and curing etc Complete. Spec. SSR 2021-22 24.01 BDE1	15.68	5538.00	Cum	86808.15
3	Filling n plinth and floors with contractors soil sand or murum in 15cm to 20cm layers including waatering and compacting complete. Spec.: SSR 2021-22 21.37 BDA11.	42.10	550.00	Cum	23152.80
4	Laying 15cm to 23cm trap/ granite/ quartzite/gneiss rubble soling including hand packing with rubble chips etc. complete as directed by engineer in charge (excluding cost of material) (spec..SSR 2021-22 21.40 BDA	23.51	1322.00	Cum	31083.53
5	Providing and laying in situ cement concrete M-20 /1:2:4 of trap / granite / quartzite / gneiss metal for reinforcement cement concrete work in foundation like raft, grillages, strips foundation and footing of reinforcement cement concrete column and steel stanchion including bailing out water, form work, compaction and finishing, curing etc complete. (Excluding steel erinforcement and structural steel) Spec.. SSR 2021-22 25.11 BDF3	4.54	6666.00	Cum	30236.98
6	providing and casting in situ cement concrete M-20 of trap/ granite/ quartzite/ gneiss metal for reinforced cenment concrete columns as per detailed designs and drawing, or as directed including centering, formwork, compacting and finishing the formed surfaces with cement mortar 1:3 of sufficient minimum thickness to give a smooth and even surface or roughening the surface if special finish is to be provided and curing etc. complete. (Excluding reinforcement) Spec. .SSR 2021-22 25.31 BDF5	4.74	12987.00	Cum	61581.76

7	Providing and laying Cast in situ/Ready Mix cement concrete M-20 of trap / granite /quartzite/ gneiss metal for R.C.C. beams and lintels as per detailed designs and drawings or as directed including steel centering, formwork, cover blocks, laying/pumping, compaction and roughening the surface if special finish is to be provided and curing etc. complete. (Excluding reinforcement and structural steel). with fully automatic micro processor based PLC with SCADA enabled reversible Drum Type mixer/ concrete Batch mix plant (Pan mixer) etc. complete. With fine aggregate (Crushed sand VSI Grade) SSR 2021-22 25.5	3.86	11483.00	Cum	44359.75
8	Providing and fixing in position TMT bar reinforcement (Produced from iron ore and made through blast furnace route as per IS 1786-2008) of various diameters for reinforced cement concrete pile caps, footings, foundations, slabs, beams, columns, canopies, stair case, newels, chajjas, lintels, pardis, copings, fins, arches etc. as per detailed designs, drawings and schedules including cutting, bending, hooking the bars binding with wires or tack welding and supporting as required complete.Spec..SSR 2021-22 26.33 BDF17	0.79	71778.00	MT	56593.57
9	Providing second class Burnt Brick masonry with conventional/ I.S. type bricks in cement mortar 1:6 in foundations and plinth of inner walls/ in plinth external walls including bailing out water manually , striking joints on unexposed faces, raking out joints on exposed faces and watering etc. Complete.SSR 2021-22 27.01 BDG1	3.05	7343.00	Cum	22394.68
10	Providing First class brick masonry in cement mortar 1:6 in superstructure including striking joints, raking out joints, watering and scaffolding complete.Spec. .SSR 2021-22 27.05 BDG5	22.30	7570.00	Cum	168817.06
11	Providing internal cement plaster 12 mm. thick in single coat in cement mortar 1:4 without neeru finish to concrete, brick surface, in all positions including scaffolding and curing complete.Spec. No.SSR 2021-22 32.04 BDL 2A	107.04	264.00	Sqm	28258.56
12	Providing neeru finish to plastered surfaces in all positions including scaffolding and curing etc. complete..SSR 2021-22 32.15	107.04	61.00	Sqm	6529.44

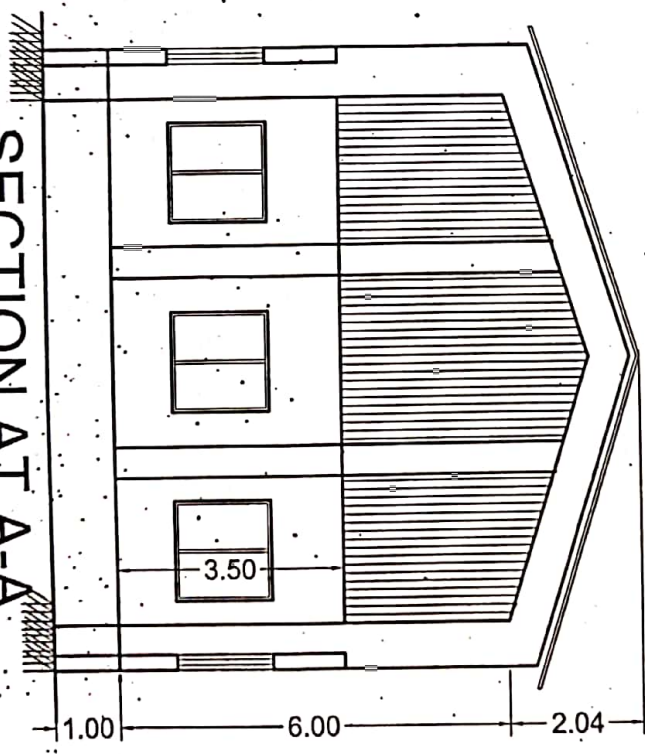
3	Providing sand faced plaster externally in cement mortar using Kharsalia/ kasaba or similar type of sand, in all positions including base coat of 15 mm. thick in cement mortar 1:4 using water proofing compound at 1 kg. per cement bag, curing the same for not less than 3 days and keeping the surface of the base coat rough to receive the sand faced treatment 6to 8 mm. thick in cement mortar 1:4 finishing the surface by taking out grains and curing for fourteen days, scaffolding etc.complete.Spec.SSR 2021-22 32.11 BDL7	137.26	599.00	Sqm	82218.74
14	providing and fixing Rolling shutter fabricated from steel laths of minimum thickness 0.9 mm with lock plate of 3.15 mm thickness, reinforced with 35 X 35 X 5 mm angle section fitted with sliding bolts and handles for both sides ,deep M.S. channel section of depth and thickness not less than 65 mm and 3.15 mm respectively with hold fast arrangements , M.S. brackets plates 300X300X3.15 mm minimum size and shape with sqare bar, suspension shaft of minimum 32 mm diameter, hood cover of M.S. sheet not less than 0.9 mm thickness and of any size at top and safety devices including mecanical gear operation arrangement consisting of worm gear wheels and worms of high grade cast iron or mild steel and one coat of red lead primer etc complete. SSR 2021-22 39.24	8.64	4310.00	Sqm	37238.40
15	Providing and fixing mild steel grill work for windows, ventilators etc: 20. kg/sqm as per drawing including fixtures, necessary welding and painting with one coats of anticorrosive paint and two coats of oil painting complete.SSR 2021-22 40.01 BDU1	15.75	1845.00	sqm	29058.75
16	Providing and constructing PEB Structure along with design and built as per ISI mark with steel plate column, steel plate truss. Z purlin, total prefabricated fitting by nut and bolt, as per design on site. Top Roofing is in pre-coated sheet along with side cladding fitting with tapping screw,side cladding purlin in Z section, wind bracing should be provided as per requirement, Rain water gutter for two sides, facia cap front and rear side of the godown, prefabricated canopy above rolling shutter upto 1.50 m wide, supplying and fitting etc. complete:(Non- DSR item)	142.70	3000.00	sqm	428087.40
				TOTAL	1146244.02


 ARCHITECT
 VISHNU KUNJAR & ASSO.
 AURANGABAD.

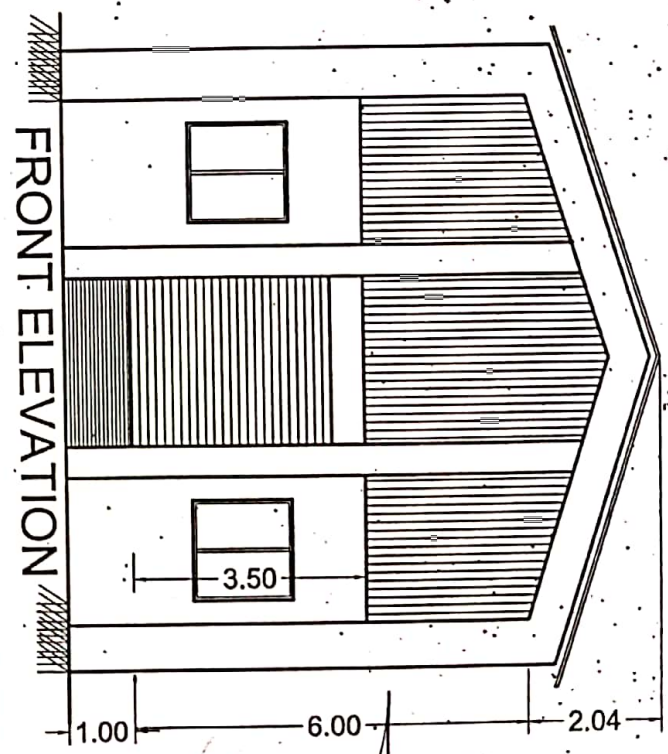
GROUND FLOOR PLAN



SECTION AT A-A



FRONT ELEVATION



PROPOSED CONSTRUCTION OF FRUIT ARRIVAL & PRODUCT DISPATCH AT MULTI FRUIT PULPING UNIT AT GUT NO - 151 /1 AT WADAWALI TQ. PAITHAN DIST. AURANGABAD BELONG'S TO :- M/S . APEGAON AGRO PROCESSOR

DRAWING BY :- RAVI
DATE:- 22 1 2022

Architect
Vishnu Kunjar & Associates
101, VEER SHANTI, KRANTI CHOWK,
AURANGABAD. 431 001.
PH. NO- 2331845, FAX NO. 2352534
email id:- vishnu_kunjar@rediffmail.com

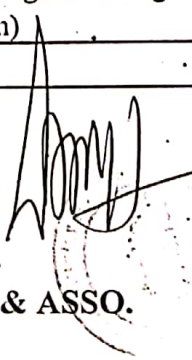
**AN ABSTRACT ESTIMATE FOR PROPOSED CONSTRUCTION OF
GODOWN & COLD STORAGE AT MULTI FRUIT PULPING
UNIT AT G.NO.151 /1 AT WADAWALI TQ PAITHAN DIST AURANGABAD
BELONGS TO M/S APEGAON AGRO PROCESSOR**

ABSTRACT SHEET

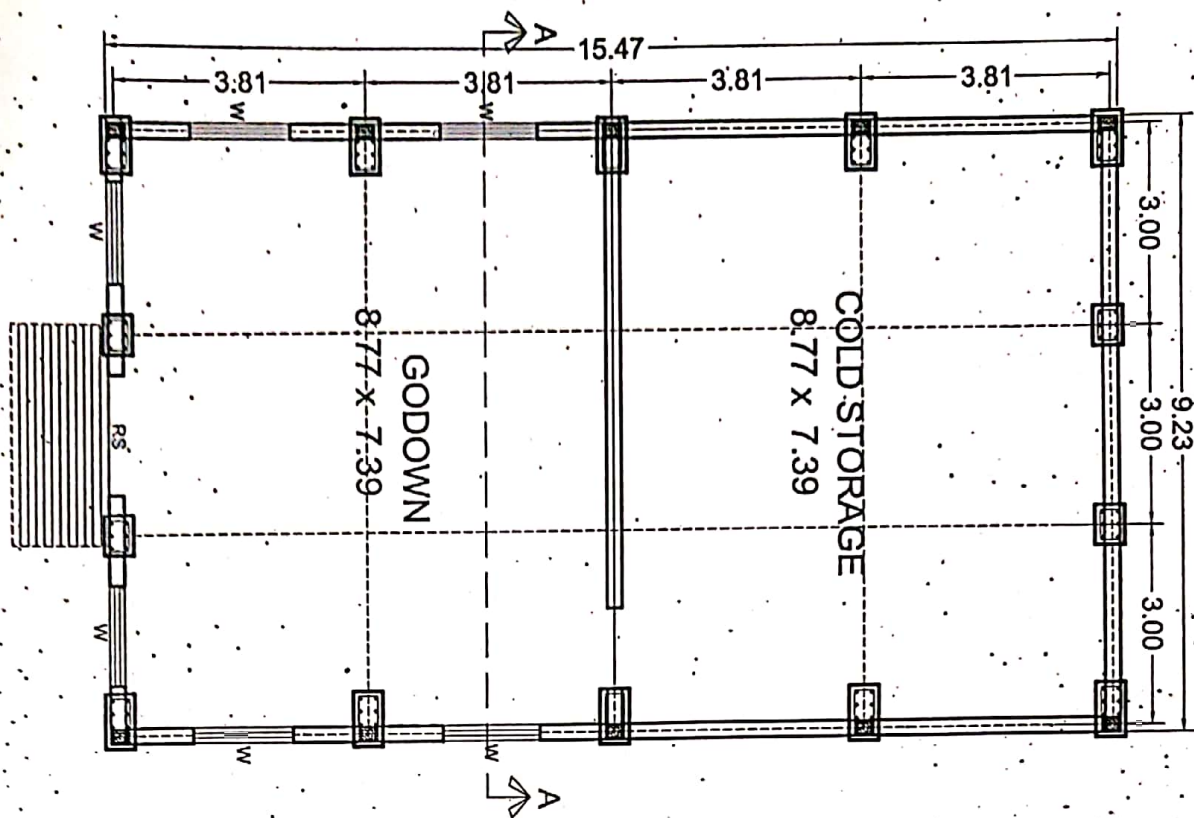
SR.N O.	DESCRIPTION OF ITEM	QTY.	RATE	UNIT	AMOUNT
1	Excavation for foundation in earth, soil of all types, sand, gravel and soft murum, including removing the excavated material up to a distance of 50 m. beyond the building area and stacking and spreading as directed, dewatering, preparing the bed for the foundation and necessary back filling, ramming, watering including shoring and strutting etc. complete. (Lift upto 1.5 m.) By Mechanical Means SSR 2021-22	50.40	193.00	Cum	9727.20
2	Providing and laying in situ cement concrete 1:3:6 of trap / granite / quartzite /gneiss metal for foundation and bedding including dewatering ,formwork ,compacting,roughening them if special finish is to be provided, finishing if required and curing etc Complete.SpecSSR 2021-22 24.01 BDE1	15.47	5538.00	Cum	85691.08
3	Filling n plinth and floors with contractors soil sand or murum in 15cm to 20cm layers including waatering and compacting complete.Spec..SSR 2021-22 21.37 BDA11	38.86	550.00	Cum	21372.93
4	Laying 15cm to 23cm trap/ granite/ quartzite/gneiss rubble soling.including hand packing with rubble chips etc. complete as directed by engineer in charge (excluding cost of material) (spec..SSR 2021-22 21.40 BDA	23.21	1322.00	Cum	30683.53
5	Providing and laying in situ cement concreteM-20 /1:2:4 of trap / granite / quartzite /gneiss metal for reinforcement cement concrete work in foundation like raft,grillages,strips foundation and footing of reinforcement cement concrete column and steel stanchion including bailing out water, form work, compaction and finishing, curing etc complete. (Excluding steel erinforcement and structural steel) Spec.. SSR 2021-22 25.11 BDF3	4.54	6666.00	Cum	30236.98
6	providing and-casting in situ cement concrete M-20 of trap/ granite/ quartzite/ gneiss metal for reinforced cement concrete columns as per detailed designs and drawing, or as directed including centering, formwork, compacting and finishing the formed surfaces with cement mortar 1:3. of sufficient minimum thickness to give a smooth and even surface or roughening the surface if special finish is to be provided and curing etc. complete. (Excluding reinforcement)Spec. .SSR 2021-22 25.31. BDF5	4.74	12987.00	Cum	61581.76

	Providing and laying Cast in situ/Ready Mix cement concrete M-20 of trap / granite /quartzite/ gneiss metal for R.C.C. beams and lintels as per detailed designs and drawings or as directed including steel centering, formwork, cover blocks, laying/pumping, compaction and roughening the surface if special finish is to be provided and curing etc. complete. (Excluding reinforcement and structural steel). with fully automatic micro processor based PLC with SCADA enabled reversible Drum Type mixer/ concrete Batch mix plant (Pan mixer) etc. complete. With fine aggregate (Crushed sand VSI Grade) SSR 2021-22 25.5	3.86	11483.00	Cum	44359.75
8	Providing and fixing in position TMT bar reinforcement (Produced from iron ore and made through blast furnace route as per IS 1786-2008) of various diameters for reinforced cement concrete pile caps, footings, foundations, slabs, beams, columns, canopies, stair case; newels, chajjas, lintels, pardis, copings, fins, arches etc. as per detailed designs, drawings and schedules including cutting, bending, hooking the bars binding with wires or tack welding and supporting as required complete.Spec..SSR 2021-22 26.33 BDF17	0.79	71778.00	MT	56593.57
9	Providing second class Burnt Brick masonry with conventional/ I.S. type bricks in cement mortar 1:6 in foundations and plinth of inner walls/ in plinth external walls including bailing out water manually , striking joints on unexposed faces, raking out joints on exposed faces and watering etc. Complete.SSR 2021-22 27.01 BDG1	3.05	7343.00	Cum	22394.68
10	Providing First class brick masonry in cement mortar 1:6 in superstructure including striking joints, raking out joints, watering and scaffolding complete.Spec. SSR 2021-22 27.05 BDG5	22.30	7570.00	Cum	168817.06
11	Providing internal cement plaster 12 mm. thick in single coat in cement mortar 1:4 without neeru finish to concrete, brick surface, in all positions including scaffolding and curing complete.Spec. No.SSR 2021-22 32.04 BDL 2A	107.04	264.00	Sqm	28258.56
12	Providing neeru finish to plastered surfaces in all positions including scaffolding and curing etc. complete..SSR 2021-22 32.15	107.04	61.00	Sqm	6529.44

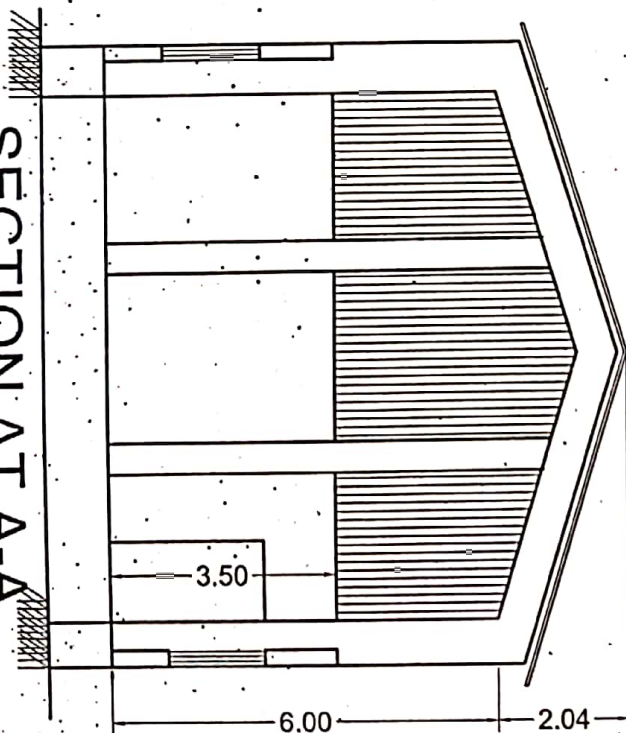
3	Providing sand faced plaster externally in cement mortar using Kharsaliã/ kasaba or similar type of sand, in all positions including base coat of 15 mm. thick in cement mortar 1:4 using water proofing compound at 1 kg. per cement bag, curing the same for not less than 3 days and keeping the surface of the base coat rough to receive the sand faced treatment 6to 8 mm. thick in cement mortar 1:4 finishing the surface by taking out grains and curing for fourteen days, scaffolding etc.complete.Spec.SSR 2021-22 32.11 BDL7	112.56	599.00	Sqm	67423.44
14	providing and fixing Rolling shutter fabricated from steel laths of minimum thickness 0.9 mm with lock plate of 3.15 mm thickness reinforced with 35 X 35 X 5 mm angle section fitted with sliding bolts and handles for both sides ,deep M.S. channel section of depth and thickness not less than 65 mm and 3.15 mm respectively with hold fast arrangements , M.S. brackets plates 300X300X3.15 mm minimum size and shape with sqare bar, suspension shaft of minimum 32 mm diameter, hood cover of M.S. sheet not less than 0.9 mm thickness and of any size at top and safety devices including mecanical gear operation arrangement consisting of worm gear wheels and worms of high grade cast iron or mild steel and one coat of red lead primer etc complete. SSR 2021-22 39.24	8.64	4310.00	Sqm	37238.40
16	Providing and constructing PEB Structure along with design and built as per ISI mark with steel plate column, steel plate truss, Z purlin, total prefabricated fitting by nut and bolt, as per design on site. Top Roofing is in precoated sheet along with side cladding fitting with tapping screw,side cladding purlin in Z section, wind bracing should be provided as per requirement, Rain water gutter for two sides, facia cap front and rear side of the godown, prefabricated canopy above rolling shutter upto 1.50 m wide, supplying and fitting etc. complete.(Non- DSR item)	142.70	3000.00	sqm	428087.40
				TOTAL	1098995.77


 ARCHITECT
 VISHNU KUNJAR & ASSO.
 AURANGABAD.

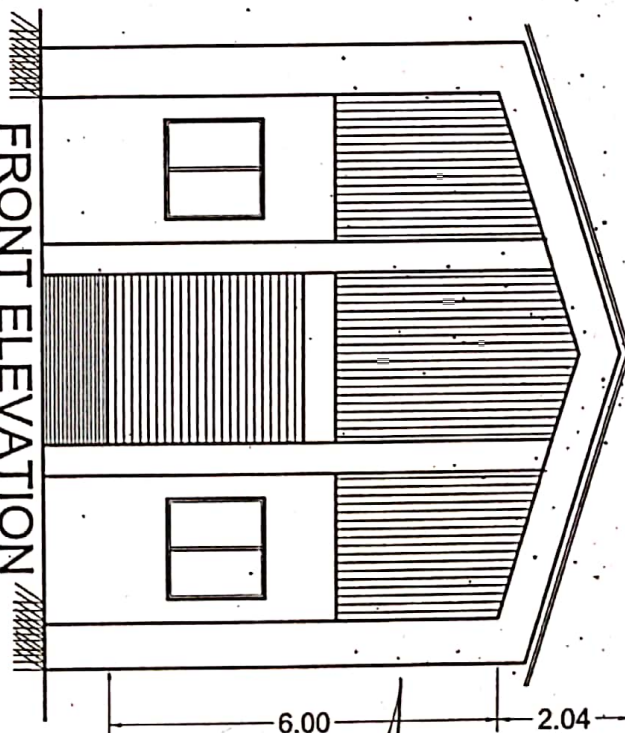
GROUND FLOOR PLAN



SECTION AT A-A



FRONT ELEVATION



PROPOSED CONSTRUCTION OF GODOWN & COLD STORAGE AT MULTI FRUIT PULPING UNIT AT GUT NO - 151 /1 AT WADAWALI TQ. PAITHAN DIST. AURANGABAD BELONG'S TO :- M/S . APEGAON AGRO PROCESSOR

DRAWING BY :- RAVI
DATE:- 22 1 2022

Architect
Vishnu Kunjar & Associates
101, VEER SHANTIL KRANTI CHOWK,
ALRANGABAD, 431 001,
PH. NO. 2331985, FAX NO. 2352534
email id:- vishnu_kunjar@rediffmail.com

**AN ABSTRACT ESTIMATE FOR PROPOSED CONSTRUCTION OF
PROCESSING HALL AT MULTI FRUIT PULPING
UNIT AT G.NO.151 /1 AT WADAWALI TQ PAITHAN DIST AURANGABAD
BELONGS TO M/S APEGAON AGRO PROCESSOR**

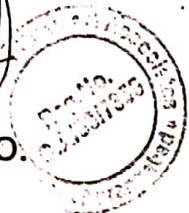
ABSTRACT SHEET

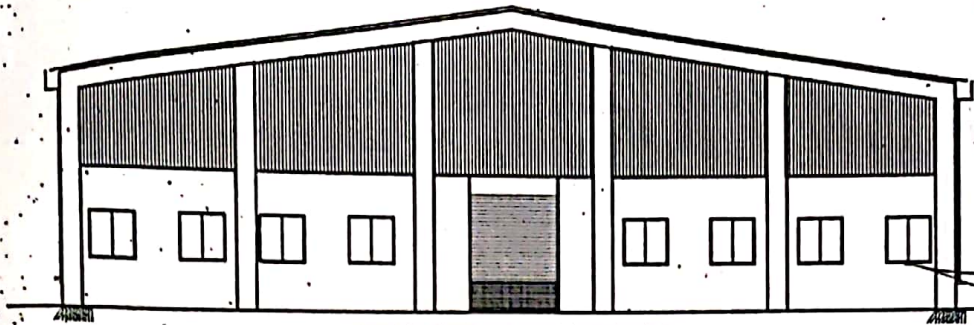
SR.N O.	DESCRIPTION OF ITEM	QTY.	RATE	UNIT	AMOUNT
1	Excavation for foundation in earth, soil of all types, sand, gravel and soft murum, including removing the excavated material up to a distance of 50 m. beyond the building area and stacking and spreading as directed, dewatering, preparing the bed for the foundation and necessary back filling, ramming, watering including shoring and strutting etc. complete. (Lift upto 1.5 m.) By Mechanical Means SSR 2021-22	79.20	193.00	Cum	15285.60
2	Providing and laying in situ cement concrete 1:3:6 of trap / granite / quartzite /gneiss metal for foundation and bedding including dewatering ,formwork ,compacting,roughening them if special finish is to be provided, finishing if required and curing etc Complete.SpecSSR 2021-22 24.01 BDE1	110.45	5538.00	Cum	611657.09
3	Filling n plinth and floors with contractors soil sand or murum in 15cm to 20cm layers including waatering and compacting complete.Spec..SSR 2021-22 21.37 BDA11	319.46	550.00	Cum	175704.03
4	Laying 15cm to 23cm trap/ granite/ quartzite/gneiss rubble soling including hand packing with rubble chips etc. complete as directed by engineer in charge (excluding cost of material) (spec..SSR 2021-22 21.40 BDA	165.67	1322.00	Cum	219016.98
5	Providing and laying in situ cement concreteM-20 /1:2:4 of trap / granite / quartzite /gneiss metal for reinforcement cement concrete work in foundation like raft,grillages,strips foundation and footing of reinforcement cement concrete column and steel stanchion including bailing out water, form work, compaction and finishing, curing etc complete. (Excluding steel erinforcement and structural steel) Spec.. SSR 2021-22 25.11 BDF3	7.13	6666.00	Cum	47515.25
6	providing and casting in situ cement concrete M-20 of trap/ granite/ quartzite/ gneiss metal for reinforced cement concrete columns as per detailed designs and drawing, or as directed including centering, formwork, compacting and finishing the formed surfaces with cement mortar 1:3 of sufficient minimum thickness to give a smooth and even surface or roughening the surface if special finish is. to be provided and curing etc. complete. (Excluding reinforcement)Spec. .SSR 2021-22 25.31 BDF5	7.45	12987.00	Cum	96771.33

	Providing and laying Cast in situ/Ready Mix cement concrete M-20 of trap / granite /quartzite/ gneiss metal for R.C.C. beams and lintels as per detailed designs and drawings or as directed including steel centering, formwork, cover blocks, laying/pumping, compaction and roughening the surface if special finish is to be provided and curing etc. complete. (Excluding reinforcement and structural steel). with fully automatic micro processor based PLC with SCADA enabled reversible Drum Type mixer/ concrete Batch mix plant (Pan mixer) etc. complete. With fine aggregate (Crushed sand VSI Grade) SSR 2021-22 25.5	12.67	11483.00	Cum	145471.24
8	Providing and fixing in position TMT bar reinforcement (Produced from iron ore and made through blast furnace route as per IS 1786-2008) of various diameters for reinforced cement concrete pile caps, footings, foundations, slabs, beams, columns, canopies, stair case, newels, chajjas, lintels, pardis, copings, fins, arches etc. as per detailed designs, drawings and schedules including cutting, bending, hooking the bars binding with wires or tack welding and supporting as required complete.Spec..SSR 2021-22 26.33 BDF17	1.63	71778.00	MT	117347.56
9	Providing second class Burnt Brick masonry with conventional/ I.S. type bricks in cement mortar 1:6 in foundations and plinth of inner walls/ in plinth external walls including bailing out water manually , striking joints on unexposed faces, raking out joints on exposed faces and watering etc. Complete.SSR 2021-22 27.01 BDG1	12.67	7343.00	Cum	93024.06
10	Providing First class brick masonry in cement mortar 1:6 in superstructure including striking joints, raking out joints, watering and scaffolding complete.Spec. SSR 2021-22 27.05 BDG5	61.07	7570.00	Cum	462262.05
11	Providing internal cement plaster 12 mm. thick in single coat in cement mortar 1:4 without neeru finish to concrete, brick surface, in all positions including scaffolding and curing complete.Spec. No.SSR 2021-22 32.04 BDL 2A	93.60	264.00	Sqm	24710.40
12	Providing neeru finish to plastered surfaces in all positions including scaffolding and curing etc. complete..SSR 2021-22 32.15	93.60	61.00	Sqm	5709.60

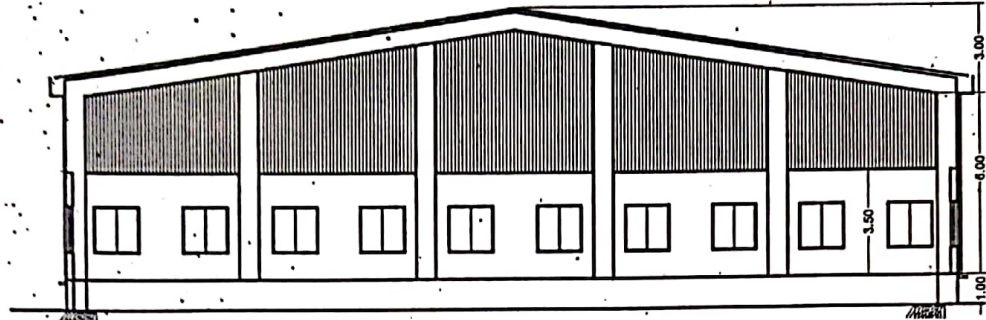
3.	Providing sand faced plaster externally in cement mortar using Kharsalia/ kasaba or similar type of sand, in all positions including base coat of 15 mm. thick in cement mortar 1:4 using water proofing compound at 1 kg. per cement bag, curing the same for not less than 3 days and keeping the surface of the base coat rough to receive the sand faced treatment 6to 8 mm. thick in cement mortar 1:4 finishing the surface by taking out grains and curing for fourteen days, scaffolding etc.complete.Spec.SSR 2021-22 32.11 BDL7	46.50	599.00	Sqm	27853.50
14	providing and fixing Rolling shutter fabricated from steel laths of minimum thickness 0.9 mm with lock plate of 3.15 mm thickness reinforced with 35 X 35 X 5 mm angle section fitted with sliding bolts and handles for both sides, deep M.S. channel section of depth and thickness not less than 65 mm and 3.15 mm respectively with hold fast arrangements, M.S. brackets plates 300X300X3.15 mm minimum size and shape with square bar, suspension shaft of minimum 32 mm diameter, hood cover of M.S. sheet not less than 0.9 mm thickness and of any size at top and safety devices including mechanical gear operation arrangement consisting of worm-gear wheels and worms of high grade cast iron or mild steel and one coat of red lead primer etc complete. SSR 2021-22 39.24	7.20	4310.00	Sqm	31032.00
17	Providing and constructing PEB Structure along with design and built as per ISI mark with steel plate column, steel plate truss, Z purlin, total prefabricated fitting by nut and bolt, as per design on site. Top Roofing is in precoated sheet along with side cladding fitting with tapping screw, side cladding purlin in Z section, wind bracing should be provided as per requirement, Rain water gutter for two sides, fascia cap front and rear side of the godown, prefabricated canopy above rolling shutter upto 1.50 m wide, supplying and fitting etc. complete.(Non- DSR item)	1095.23	3000.00	sqm	3285698.70
				TOTAL	5359059.38

ARCHITECT
VISHNU KUNJAR & ASSO.
AURANGABAD.

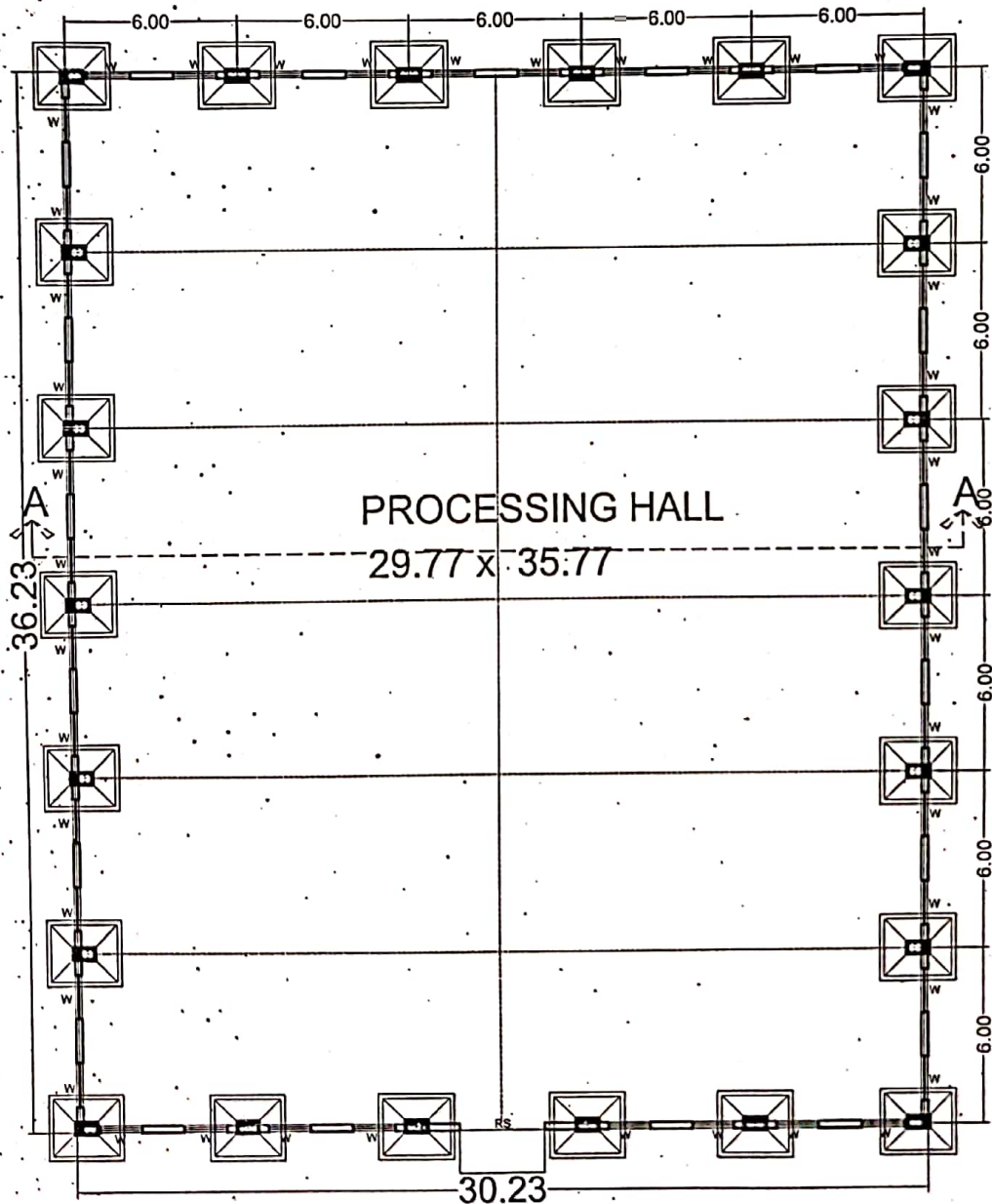




FRONT ELEVATION



SECTION AT A-A



GROUND FLOOR PLAN

Architect
Vishnu Kunjar & Associates
 101, YEER SHANTI, KRANTI CHOWK,
 AURANGABAD, 431 001.
 PH. NO- 2331865, FAX NO. 2352534
 email id- vishnu_kunjar@rediffmail.com

DRAWING BY :- RAVI

DATE:- 22.1.2022

PROPOSED CONSTRUCTION OF PROCESSING HALL
 AT MULTI FRUIT PULPING UNIT AT GUT NO - 151 /1
 AT WADAWALI TQ. PAITHAN DIST. AURANGABAD
 BELONG'S TO :- M/S. APEGAON AGRO PROCESSOR

**AN ABSTRACT ESTIMATE FOR PROPOSED CONSTRUCTION OF
OFFICE AND LAB AT MULTI FRUIT PULPING UNIT AT
G.NO.151 /1 AT WADAWALI TQ PAITHAN DIST AURANGABAD
BELONGS TO M/S APEGAON AGRO PROCESSOR**

ABSTRACT SHEET

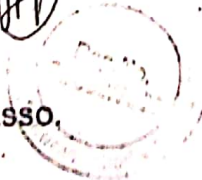
S.NO.	PARTICULARS	QTY.	RATE	UNIT	AMOUNT
1.	Excavation for foundation in earth, soil of all types, sand, gravel and soft murum, including removing the excavated material up to a distance of 50 m. beyond the building area and stacking and spreading as directed, dewatering, preparing the bed for the foundation and necessary back filling, ramming, watering including shoring and strutting etc. complete. (Lift upto 1.5 m.) By Mechanical Means SSR 2021-22 21.02	50.40	193.00	Cum	9727.20
2	Laying 15cm to 23cm trap/ granite/ quartzite/gneiss rubble soling including hand packing with rubble chips etc. complete as directed by engineer in charge (excluding cost of material) (spec..SSR 2021-22 21.40 BDA	16.30	1322.00	Cum	21553.60
3	Filling n plinth and floors with contractors soil sand or murum in 15cm to 20cm layers including waatering and compacting complete.Spec..SSR 2021-22 21.37 BDA11	25.05	550.00	Cum	13776.16
4.	Providing and laying in situ cement concrete M-15/1:2:4 of trap/ granite/ quartzite/gneiss metal for foundation and bedding including form work, dewatering, compacting roughening them if special finish is to be provided finishing if required and curing etc. complete.(spec..SSR 2021-22 24.04 BDE2	10.87	6030.00	cum	65541.22
5.	Providing and laying in situ cement concreteM-20 /1:2:4 of trap / granite / quartzite /gneiss metal for reinforcement cement concrete work in foundation like raft,grillages,strips foundation and footing of reinforcement cement concrete column and steel stanchion including bailing out water; form work, compaction and finishing, curing etc complete. (Excluding steel erinforcement and structural steel) Spec.. SSR 2021-22 25.11 BDF3	4.54	6666.00	cum	30236.98
6	providing and casting in situ cement concrete M-20 of trap/ granite/ quartzite/ gneiss metal for reinforced cement concrete columns as per detailed designs and drawing, or as directed including centering, formwork, compacting and finishing the formed surfaces with cement mortar 1:3 of sufficient minimum thickness to give a smooth and even surface or roughening the surface if special finish is to be provided and curing etc. complete, (Excluding reinforcement)Spec. .SSR 2021-22 25.31.BDF5	5.80	12987.00	cum	75272.65

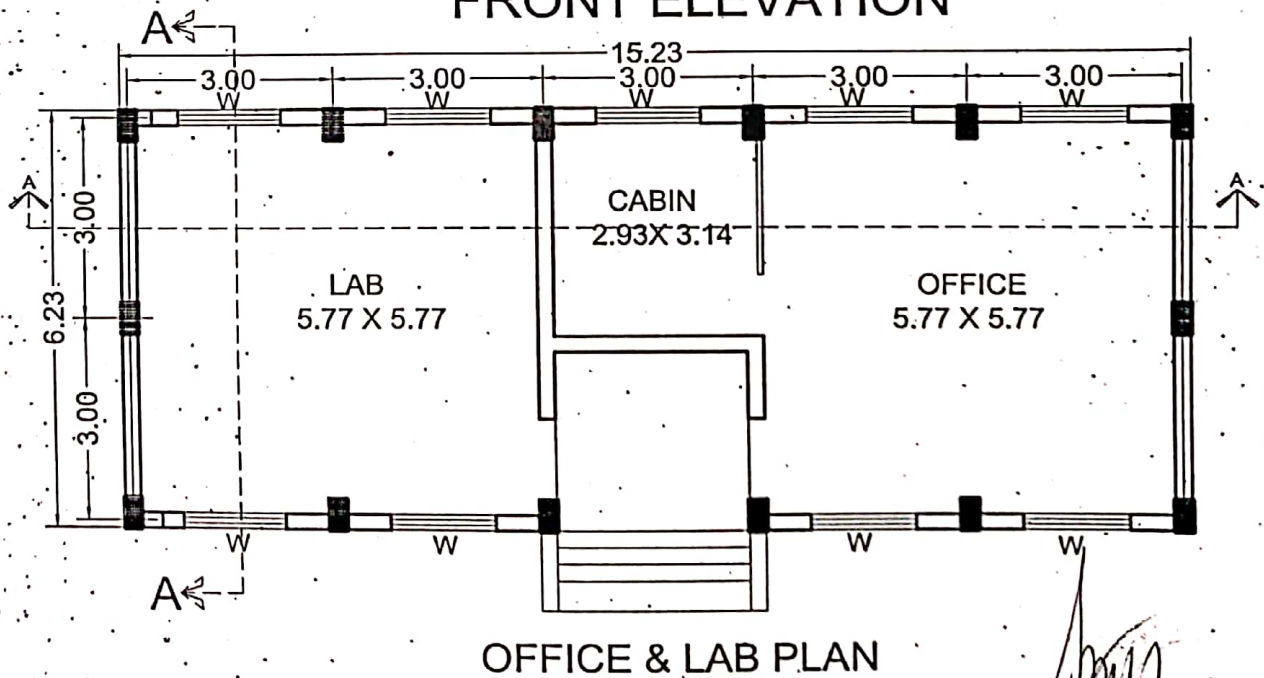
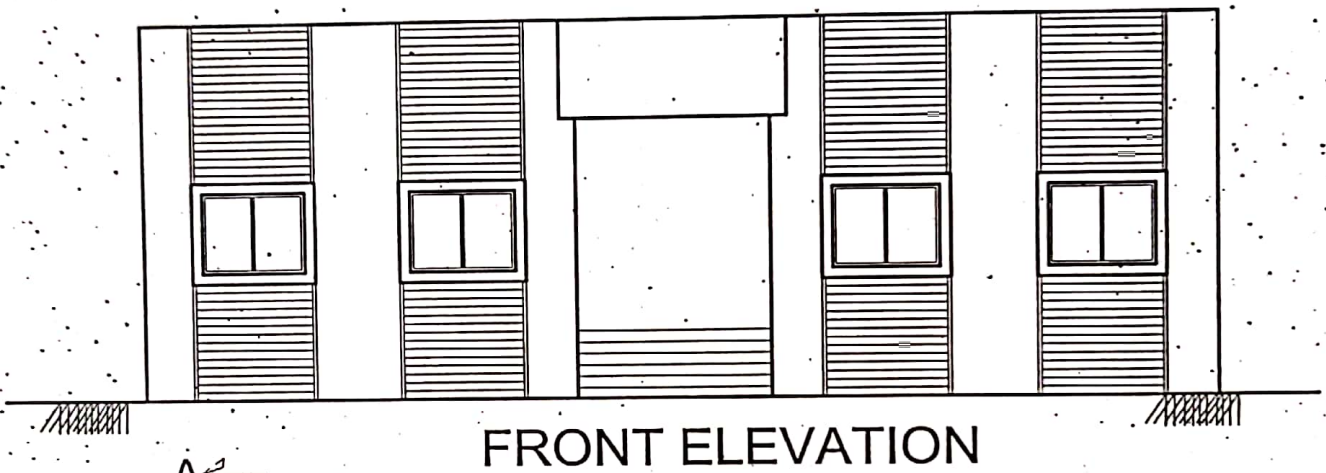
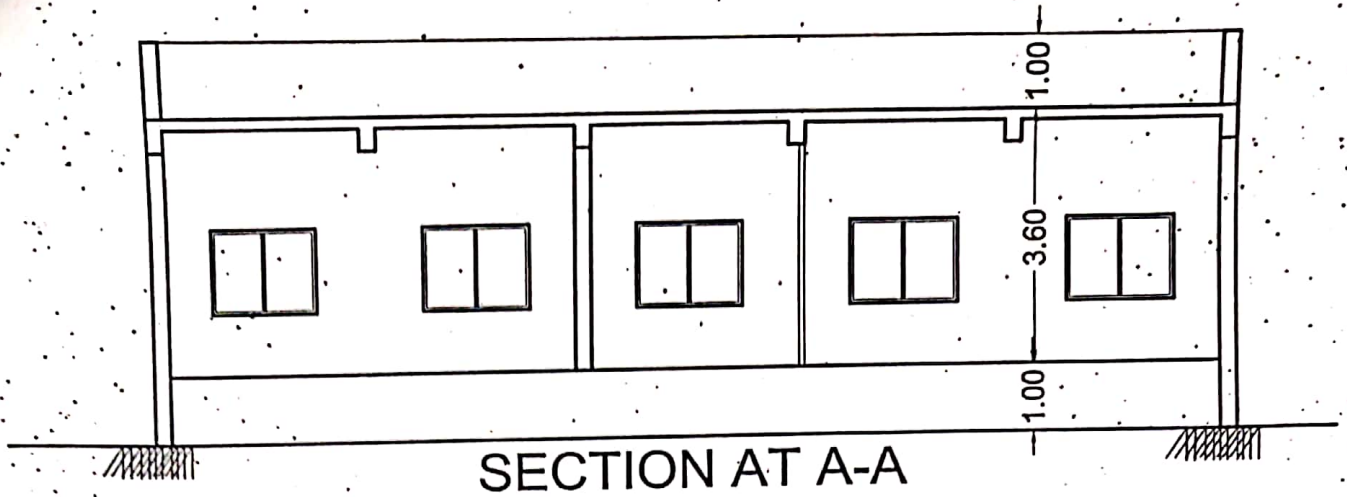
S.NO.	PARTICULARS	QTY.	RATE	UNIT	AMOUNT
7	Providing and casting in situ cement concrete M-20 of trap/ granite/ quartzite/ gnesis metal for reinforced cement concrete beams and lintels as per detailed designs and drawings, or as directed including, centering, form work of plywood / steel, compaction and roughening the surface if special finishing to be provided and curing etc. complete (Excluding reinforcement). Spec.SSR 2021-22 25.50 BDF6	9.84	11483.00	cum	112967.87
8	Providing and laying Cast in situ/Ready Mix cement concrete M-20 of trap/ granite / quartzite/ gneiss metal for R.C.C. slabs and landings as per detailed designs and drawings including steel centering, formwork, cover blocks, laying/pumping, compaction finishing the formed surfaces with cement mortar 1:3 of sufficient minimum thickness to give a smooth and even surface or roughening if special finish is to be provided and curing etc. complete,(Excluding reinforcement and structural steel).with fully automatic micro processor based PLC with SCADA enabled reversible Drum Type mixer/ concrete Batch mix plant (Pan mixer) etc. complete. With fine aggregate (Crushed sand VSI Grade) SSR 2021-22 25.7	9.49	13943.00	cum	132295.23
9	Providing and fixing in position TMT bar reinforcement (Produced from iron ore and made through blast furance route as per IS 1786-2008) of various diameters for reinforced cement concrete pile caps, footings, foundations, slabs, beams, columns, canopies, stair case, newels, chajjas, lintels, pardis, copings, fins, arches etc. as per detailed designs, drawings and schedules including cutting, bending, hooking the bars.binding with wires or tack welding and supporting as required complete.Spec..SSR 2021-22 26.33 BDF17	2.68	71778.00	MT	192273.14.
10	Providing second class Burnt Brick masonry with conventional/ I.S. type bricks in cement mortar 1:6 in foundations and plinth of inner walls/ in plinth external walls including bailing out water manually , striking joints on unexposed faces, raking out joints on exposed faces and watering etc. Complete. ssr 2021-22 27.01	3.49	7343.00	cum	25603.57
11.	Providing First class brick masonry in cement mrotar 1:6 in superstructure incuding striking joints, raking out joints, watering and scaffolding compete.Spec..SSR 2021-22 27.05 BDG5	20.487	7570.00	cum	155088.48

S.NO.	PARTICULARS	QTY.	RATE	UNIT	AMOUNT
12	Providing second class Burnt Brick masonry with conventional/ I.S. type bricks in cement mortar 1:4 in half brick thick wall including mild steel longitudinal reinforcement of 2 bars of 6 mm diameter /2 hoop iron strips 25 mm X 1.6 mm placed at every third course, properly bent and bonded at ends scaffolding, racking out joints and watering etc. complete. SSR 2021-22 27.06	6.54	1023.00	sqm	6693.49
13	Providing internal cement plaster 12 mm. thick in single coat in cement mortar 1:4 without neeru finish to concrete, brick surface, in all positions including scaffolding and curing complete. Spec. No. SSR 2021-22 32.04 BDL 2A	241.37	264.00	sqm	63720.94
14	Providing neeru finish to plastered surfaces in all positions including scaffolding and curing etc. complete. SSR 2021-22 32.15.	241.37	61.00	sqm	14723.40
15	Providing sand faced plaster externally in cement mortar using Kharsalia/ kasaba or similar type of sand, in all positions including base coat of 15 mm. thick in cement mortar 1:4 using water proofing compound at 1 kg. per cement bag, curing the same for not less than 3 days and keeping the surface of the base coat rough to receive the sand faced treatment 6 to 8 mm. thick in cement mortar 1:4 finishing the surface by taking out grains and curing for fourteen days, scaffolding etc. complete. Spec. SSR 2021-22 32.11 BDL7	171.68	599.00	sqm	102836.32
16	Providing and fixing M40 grade thick vibrated pull cast or similar type concrete frame with chamfer conforming to I.S. 65241983 having 6 mm dia. bars 3 Nos. And stirrups @250 mm c/c and fixing in wall with 6 Nos of hold fast of 12 mm dia bars 500 mm long including primer and oil painting etc, complete) frame size 60 mm x 100 mm . SSR 2021-22 39.56	15.80	899.00	rgm	14204.20
17	Providing and fixing solid core flush door shutter in single leaf 32 mm thick decorative type of exterior grade as per detailed drawings approved face veneers 3 mm thick on both faces or as directed, all necessary beads, mouldings and lipping, wrought iron hold fasts, chromium plated fixtures and fastenings, with brass mortise lock, chromium plated handles on both sides, and finishing with French Polish etc. complete. SSR 2021-22 39.09	6.09	2824.00	SQM	17198.16
18	Providing sills of required material 20mm to 25mm thick, on a bed of cement mortar 1:4 including cement float, filling joints with neat cement slurry, curing, moulding edges, polishing, cleaning complete. b) Granite SSR 2021-22 33.22	3.28	3872.00	sqm	12707.90

NO.	PARTICULARS	QTY.	RATE	UNIT	AMOUNT
19	Providing and fixing mild steel grill work for windows, ventilators etc. 20 kg/sqm as per drawing including fixtures, necessary welding and painting with one-coats of anticorrosive paint and two coats of oil painting complete.SSR 2021-22 40.01 BDU1	16.20	1845.00	sqm	29889.00
20	Providing and fixing in position (as per 1868./1982) Alluminium sliding window of three tracks with rectangular pipe 95 x 38.10 x 0.90 mm at weight 0.637 Kilogram/Running metre. with window frame bottom track section 92 x 31.75 x 1.30 mm at weight 1.070 am/Running metre.. Top and side track section 92 x 31.75 x 1.30 mm at weight 0.933 Kilogram/Running metre. The shutter should be of bearing bottom 40 x 18 x 1.25 mm at weight 0.417 Kilogram/Running metre. Inter locking section 40 x 18 x 1.10 mm at weight 0.469 Kilogram/Running metre. and handle and top section 40 x 18 x 1.25 mm at weight 0.417 Kilogram/Running metre. As per detailed drawings and as directed by Engineerincharge with all necessary Aluminium sections fixtures and fastenings such as roller bearing in nylon casting and self locking catch fitted in vertical section of shutter including 5 mm thick plain glass and aluminium mosquito net shutter with stainless steel jail with all required screws and	16.20	5826.00	SQM	94381.20
21.	Providing and laying vitrified mirror / glossy finish tiles decorative-type having size 590 mm to 605 mm x 590 mm to 605 mm of 8 to 10 mm thickness and confirming to IS. 15622-2006 (group Bla) of approved make, shade and pattern for flooring in required position laid on a bed of 1:4 cement mortar including neat cement float, filling joints, curing and clearing etc. complete. SSR 2021-22 33.40	82.43	1155.00	sqm	95211.27
22.	Providing and laying vitrified mirror / glossy finish files having size 590 mm to 605 mm x 590 mm to 605 mm of 8 to 10 mm thickness and confirming to IS. 15622-2006 (group Bla) of approved make, shade and pattern for dado and skirting in required position fixed in 1:4 cement mortar including neat cement float,filling joints, curing and clearing etc. complete SSR 2021-22 33.41	6.61	1227.00	sqm	8104.34
					1294006.32

ARCHITECT:
VISHNU KUNJAR & ASSO.
AURANGABAD.





PROPOSED CONSTRUCTION OF OFFICE & LAB
 AT MULTI FRUIT PULPING UNIT AT GUT NO - 151 /1
 AT WADAWALI TQ. PAITHAN DIST. AURANGABAD
 BELONG'S TO :- M/S . APEGAON AGRO PROCESSOR

DRAWING BY :- RAVI
 DATE :- 22 1 2022

Architect
Vishnu Kunjar & Associates
 101, VEER SHANTI, KRANTI CHOWK,
 AURANGABAD 431 001.
 PH. NO- 2331888, FAX NO. 2352534
 email id:- vishnu_kunjar@rediffmail.com